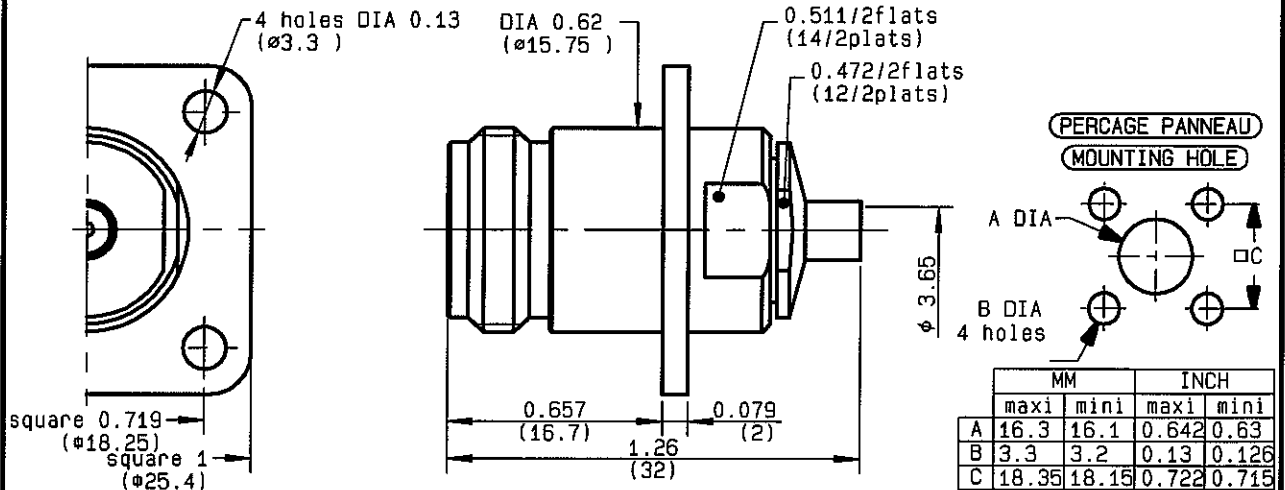



**STRAIGHT SQUARE FLANGE JACK  
SOLDER TYPE - CABLE .141**

**R161.277.300**  
**SERIES N**



NOMINAL IMPEDANCE	<b>50</b> Ω	CABLES :	<b>BELN 1673A</b>
FREQUENCY RANGE	<b>0-11</b> GHz		<b>HC80000-3</b>
TEMPERATURE RATING	<b>-55/+105</b> °C		<b>KS 2</b>
V.S.W.R	<b>1.15</b> + x F(GHz)Maxi		<b>RG 402</b>
RF INSERTION LOSS	<b>0.048</b> √F(GHz) dB Maxi		<b>SUCOFORM 141</b>
VOLTAGE RATING	<b>335</b> Veff Maxi	OTHERS CHARACTERISTICS	
DIELECTRIC WITHSTANDING VOLTAGE	<b>1000</b> Veff Mini	CABLE RETENTION	<b>500</b> N Mini
INSULATION RESISTANCE	<b>5000</b> M.ΩMini	CENTER CONTACT RETENTION	
HERMETIC SEAL	<b>NA</b> Atm.cm <sup>3</sup> /s	Axial force - mating end	<b>NA</b> N Mini
LEAKAGE (pressurized only)	<b>NA</b>	Axial force - opposite end	<b>NA</b> N Mini
MECHANICAL DURABILITY	<b>500</b> Cycles	Torque	<b>NA</b> cm.N Mini
WEIGHT	<b>36.32</b> gr	RECOMMENDED TORQUES	
SPECIFICATION		Mating	<b>NA</b> cm.N
		Panel nut	<b>NA</b> cm.N
		Clamp nut	<b>150</b> cm.N

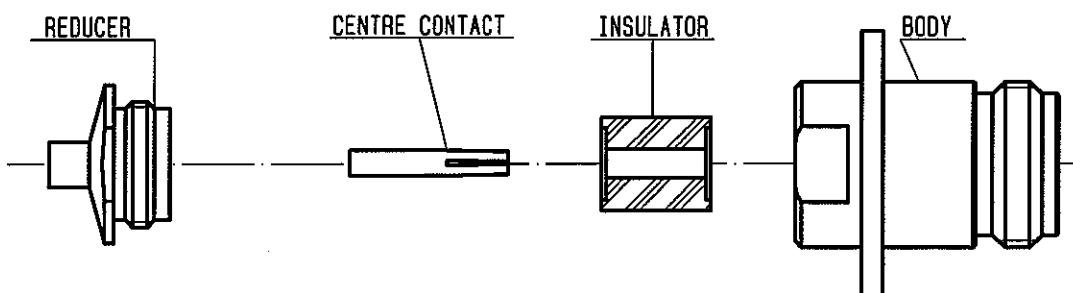
CONNECTOR PARTS	MATERIALS	FINISH	(all values are given in micrometers)
BODY	BRASS	BBR 2	
OUTER CONTACT			
CENTER CONTACT	BERYLLIUM COPPER	GOLD 0.5 OVER NICKEL 2	
INSULATOR	PTFE	-	
GASKET		-	
OTHERS PIECES	BRASS	GOLD 0.2 OVER NICKEL 2	

ISSUE <b>0523A00</b>	CREATION DATE <b>09/04/1997</b>	FILE PART-NUMBER <b>EPC 96-07</b>	 <b>RADIALL</b> ®
-------------------------	------------------------------------	--------------------------------------	---

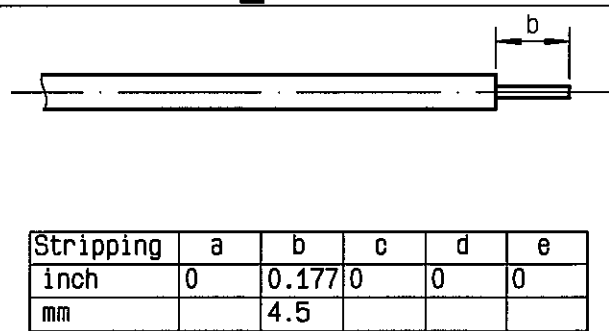
QUERIN



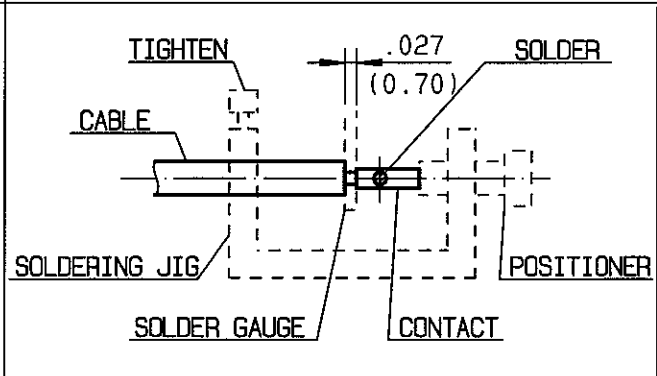
**R161.277.300**  
 ISSUE 0523 A00 | SERIES N



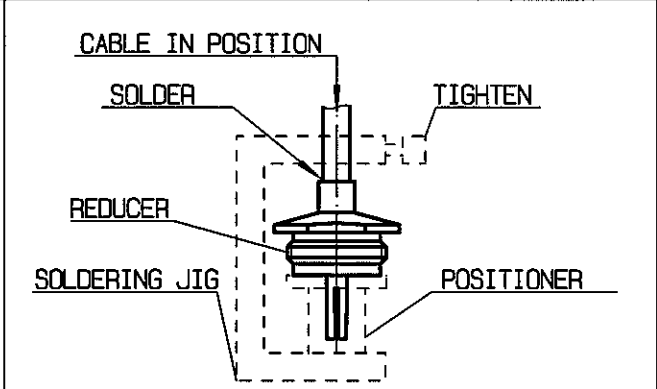
①  
 Take the tool kit : R 282 125 010 .  
 Strip the dielectric of the cable .  
 Stripping tool cable : R 282 053 .  
 Trimmer : R 282 066 010 .  
 Clean the cable .  
 -



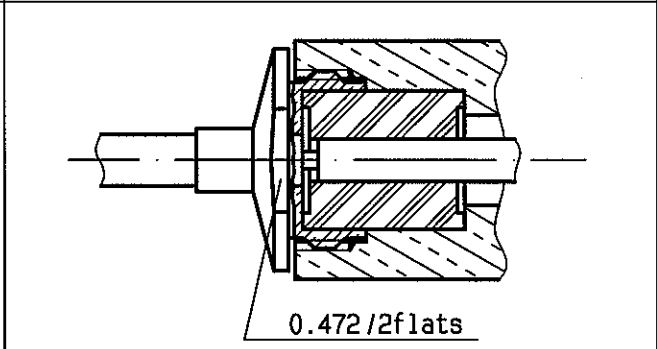
②  
 Screw the positioner R282 744 260 onto the soldering jig R 282 740 030 .  
 Slide contact into positioner .  
 Insert solder gauge R 282 862 090 between contact and cable .  
 Tighten and solder the contact .



③  
 After cooling remove cable assembly from the jig .  
 Put positioner R282 744 310 on the soldering jig .  
 Slide cable into the reducer until it bottoms against positioner R282 744 310 .  
 Tighten .  
 Put 3 rings of solder around the cable and solder .



④  
 After cooling remove cable assembly from the jig .  
 Slide insulator into the centre contact .  
 Screw sub-assembly into the connector body .  
 ( recommended coupling torque 13.27 in.lb )



QUERIN